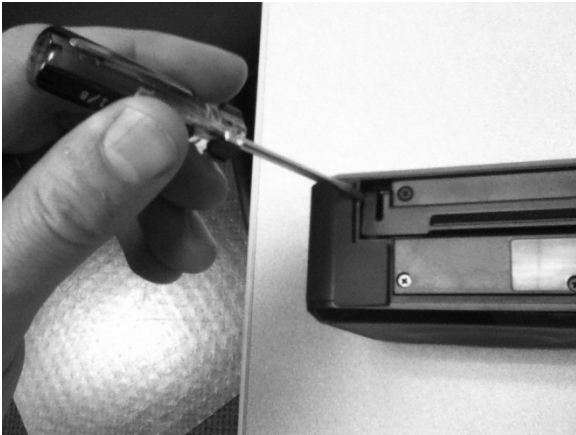




Life on Record

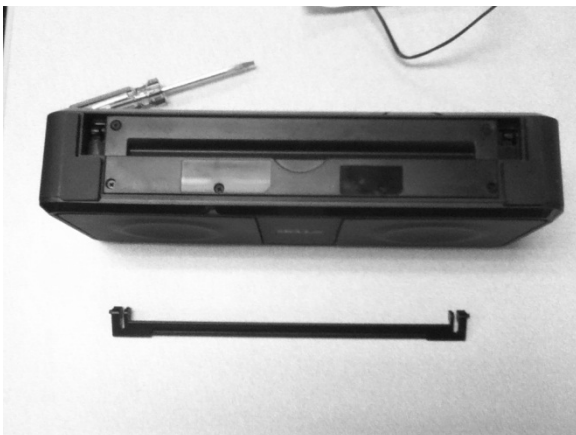
## A33 Battery Replacement Instructions



REMOVE KICKSTAND



1. USE FLATHEAD SCREWDRIVER  
TO PRY KICKSTAND ATTACHMENT  
LEG FROM HOLE



2. REPEAT ON OTHER SIDE



Life on Record

## REMOVE BATTERY DOOR SCREWS



3. USE A TORX HEAD (size T-6) SCREWDRIVER TO REMOVE 6 SCREWS



4. USE FLATHEAD SCREWDRIVER TO PRY LID FROM HOUSING. THE DOOR IS AFFIXED TO THE HOUSING WITH ADHESIVE TAPE.



5. REMOVE DOOR AS SHOWN



Life on Record

## REMOVE BATTERY AND REPLACE WITH NEW BATTERY



### 6. REMOVE BATTERY FROM HOUSING



### 7. UNPLUG HOUSING CONNECTOR FROM BATTERY CONNECTOR



### 8. REPLACE WITH NEW BATTERY AND PLUG BATTERY CONNECTOR WITH HOUSING CONNECTOR



Life on Record

## BATTERY COVER INSTALLATION



9. RE-INSTALL BATTERY COVER



10. RE-INSTALL SCREWS (6 PLACES)



11. RE-INSTALL KICKSTAND.  
SNAP BOTH ENDS INTO SPEAKER HOUSING.



Life on Record

## BATTERY COVER INSTALLATION



### 12. COMPLETED BATTERY REPLACEMENT